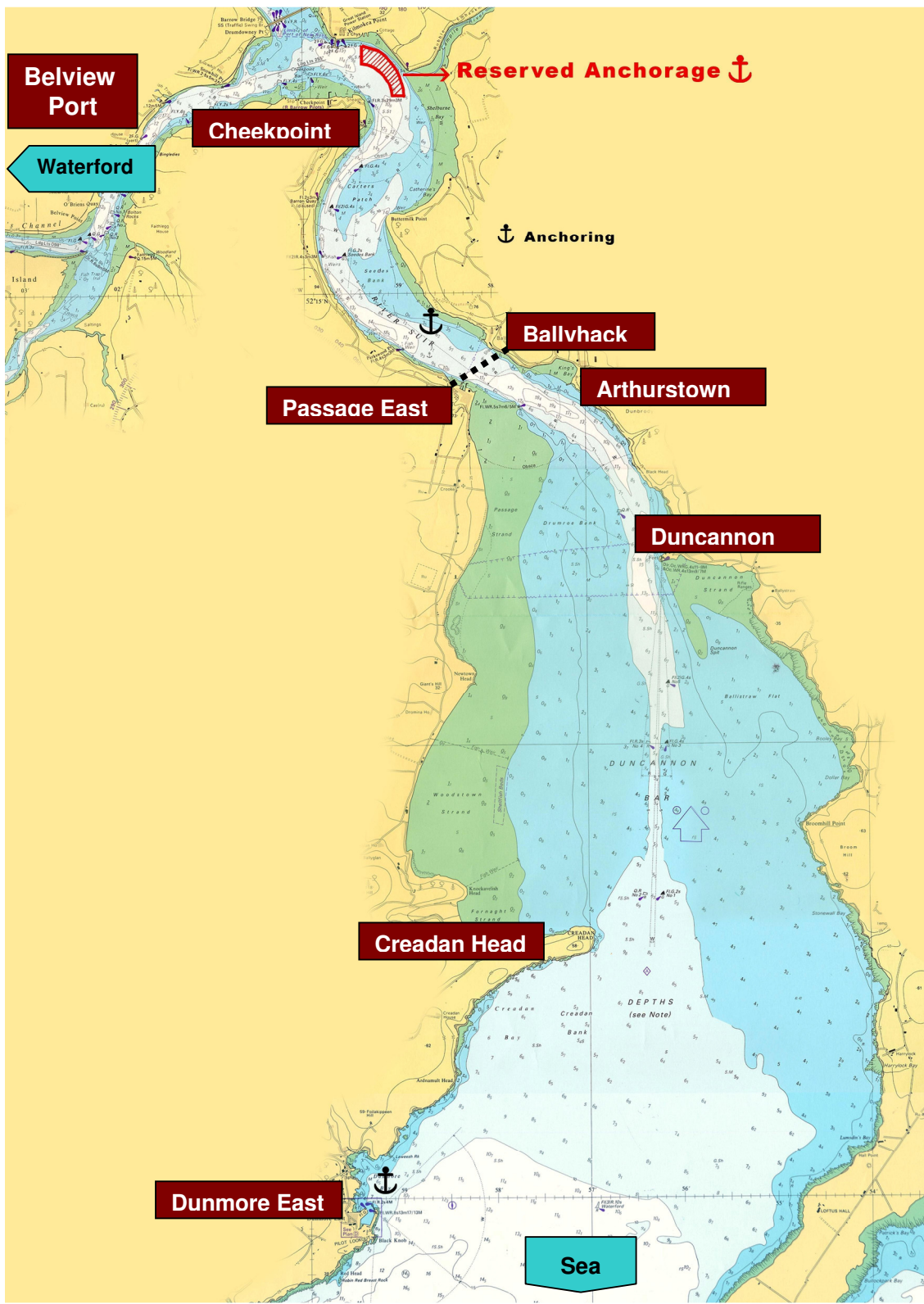


Tallships 2011 Waterford

Anchorage Positions in Waterford Harbour

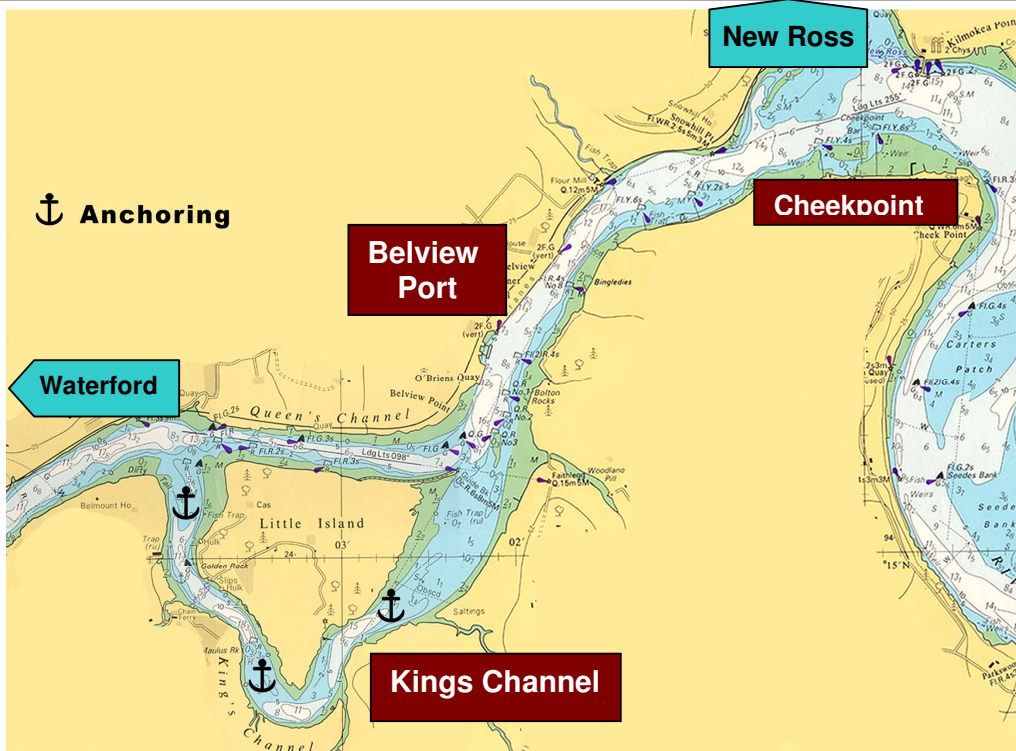
June 27th to July 4th 2011



Published by Port of Waterford Harbour Master

June 2011

Tallships 2011 Waterford
Anchorage Positions in Waterford Harbour
June 27th to July 4th 2011



Published by Port of Waterford Harbour Master

June 2011

Note: Care should be taken on entering the Kings Channel at low water.
Consult charts.